

24 Day Cruise | Circumnavigate Australia with Princess Cruises 2025

Melbourne - Adelaide - Albany - Margaret River - Perth - Geraldton - Broome - Kimberley Coast - Darwin - Port Douglas - Cairns - Willis Island - Brisbane - Sydney

From **\$9,899** pp Twin Share

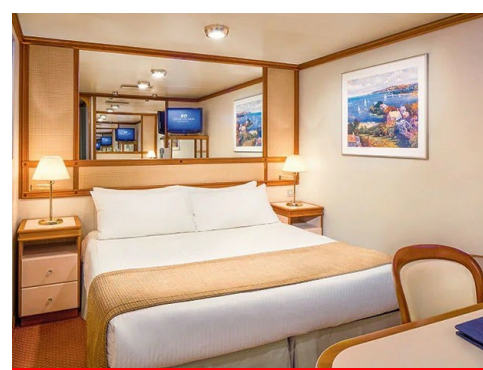


Spend 24 days travelling onboard the Crown Princess

Embark on a unique adventure circumnavigating the coast of Australia

Enjoy a scenic cruise along the Kimberley Coast

Description



-THIS DEAL IS NO LONGER AVAILABLE/SOLD OUT-

Princess Cruises' Round Australia 24 day cruise is an incredible way to explore the beauty and diversity of Australia's coast. This itinerary typically includes stops in a variety of ports around the country, giving passengers the opportunity to experience the unique culture, history, and natural wonders of each region.

Onboard the ship, passengers can enjoy a range of amenities and activities to keep them entertained throughout their voyage. This may include multiple dining options, bars and lounges, a spa and fitness center, entertainment venues, and more. Many Princess Cruises ships also have pools, hot tubs, and outdoor sports facilities, allowing passengers to enjoy the beautiful Australian weather while at sea.

A round Australia cruise with Princess Cruises is an unforgettable experience that allows passengers to see the best of what this incredible country has to offer. With comfortable accommodation, delicious food, and a range of activities and amenities onboard, this is the perfect way to explore Australia in style.



Itinerary

Day 1

Melbourne

Victoria may be Australia's smallest continental state, but Melbourne, its capital, is big on everything. With a population of 4.25 million people living in 59 separately named communities within 715 square miles, Melbourne is a sprawling city offering culture, art, fashion and friendly, sports-minded Australians. It is also an easy city to explore. At the heart of the city is the Golden Mile, the city's governmental and commercial center, home to hotels, shops, restaurants and theaters.

Originally part of New South Wales, Victoria became a colony in its own right in 1851. The discovery of gold propelled Melbourne's growth to prominence and prosperity.

This evening the ship will depart at 10PM.

Meals: Onboard Meals

Accommodation: Crown Princess

Day 2

At Sea

Today is a day at sea. Simply relax or enjoy the ships facilities and activities.

Meals: Onboard Meals

Accommodation: Crown Princess

Day 3

Adelaide

Today you arrive at 7AM. Founded in 1836, this graceful city lies nestled on the coastal plain between Gulf St. Vincent and the Adelaide Hills. Adelaide was the vision of Colonel William Light, Australia's Surveyor General, who created a one-mile-square grid for the city's center and surrounded it with a belt of stunning parkland. Today, Adelaide is a metropolis of over one million people, boasting wide, tree-lined boulevards, superb Victorian and Edwardian architecture, tranquil parks, world-class shopping, and the highest number of restaurants per capita of any city in Australia.

Beyond the city and the rugged Adelaide Hills lie the Barossa and Eden Valleys. Here Australian vintners are winning international acclaim for their Cabernet Sauvignon, Riesling, Sauvignon Blanc and Shiraz.

Departure is set for 6PM.

Meals: Onboard Meals

Accommodation: Crown Princess

Day 4

At Sea

Today is a day at sea. Simply relax or enjoy the ships facilities and activities.

Meals: Onboard Meals

Accommodation: Crown Princess

Day 5

At Sea

Today is a day at sea. Simply relax or enjoy the ships facilities and activities.

Meals: Onboard Meals

Accommodation: Crown Princess

Day 6

Albany

Today you arrive at 7AM. On December 26, 1826 - Boxing Day - Major Edmund Lockyer and his party of convicts and soldiers landed at Princess Royal Harbor to establish a penal colony. Originally named Frederickstown in honor of the Duke of York and Albany, the first European settlement in Western Australia was renamed Albany in 1832. Thanks to its superb harbor, the town quickly became a busy port. Albany served as a coaling station for steam ships, as a commercial outlet for the rich farms of the interior, and as a base for the highly profitable whaling industry. The whaling station at Frenchman Bay was the last whaling station in all Australia, closing in 1978. Today it is home to Whale World, one of the world's largest whaling museums.

This small city of some 25,000 souls is off the beaten track. Which makes exploring all the more fun, whether visiting Whale World Museum or touring one of the area's excellent wineries.

Departure is set for 4PM.

Meals: Onboard Meals

Accommodation: Crown Princess

Day 7

Margaret River (Busselton)

Today you arrive at 9AM. This vibrant coastal city is a laid-back charmer with an enticing array of natural wonders and active pursuits. Just steps from the mile-long Jetty are glistening white sand beaches and sun-drenched seaside villages. Yet the magic of the Margaret River area beckons with 120 premium wineries; ancient caves boasting a subterranean world of jaw-dropping stalactite, stalagmite, helictite and shawl formations; a fascinating Aboriginal culture rooted in ancient history; and a picture perfect landscape of meandering country roads and spectacular scenery.

Note: This is an anchorage port. Passengers transfer to shore via ship's tender. Wheelchair Access Limited.

Departure is set for 6PM.

Meals: Onboard Meals

Accommodation: Crown Princess

Day 8

Perth

Today you arrive at 7AM. Lying at the mouth of the Swan River, historic Fremantle - founded in 1829 - is your gateway to Perth, the capital of Western Australia. Situated on the banks of the Swan River some 15 miles upriver from Fremantle, Perth is a bustling city where soaring high-rises co-exist with elegant sandstone buildings from the colonial era. Life here moves at a slower pace, so during your visit, relax and savor the bounties of Western Australia, from the wonders of the bush to the wineries of the Swan Valley, from excellent shopping to a leisurely cruise on the Swan River. Perth's explosive growth in recent decades has engulfed the old historic port of Fremantle - some 70 percent of Western Australia's population live in and around Perth.

Departure is set for 5PM.

Meals: Onboard Meals

Accommodation: Crown Princess

Day 9

Geraldton

Today you arrive at 7AM. The capital of the Batavia Coast was founded in 1850 as a commercial port serving the Northampton lead mine some 30 miles to the north. While Geraldton remains one of Western Australia's major ports, the city has become a magnet for vacationing Australians. Located between the Chapman and Greenough Rivers, Geraldton boasts a superb Mediterranean climate, scenic beauty and pristine beaches. Coronation Beach has become an international destination for windsurfers.

In 1692 the Dutch East India Company Batavia was shipwrecked on the offshore Abrolhos Islands. Calamity was followed by mutiny and murder. The lurid tale ensured this portion of Western Australia would be named the Batavia Coast.

Note: Geraldton is an anchorage port. Passengers transfer to shore via ship's tender. Wheelchair Access Limited.

Departure is set for 4PM.

Meals: Onboard Meals

Accommodation: Crown Princess

Day 10

At Sea

Today is a day at sea. Simply relax or enjoy the ships facilities and activities.

Meals: Onboard Meals

Accommodation: Crown Princess

Day 11

At Sea

Today is a day at sea. Simply relax or enjoy the ships facilities and activities.

Meals: Onboard Meals

Accommodation: Crown Princess

Day 12

Broome

Today you will arrive at 7AM. In the 1870s, pearl fishermen discovered the rich waters of Roebuck Bay. A decade later, Broome was founded as a base for the pearl trade and was soon described as "the pearling capital of the world." Japanese, Chinese and Aborigine divers toiled in arduous, dangerous labor to harvest oysters from the seabed. For all its importance to the pearling industry, Broome remained a remote outpost on Australia's Kimberley Coast until its discovery as a travel destination. The legacy of its pearling days can be seen in the town's colorful mix of 19th- and early 20th century buildings. Broome also boasts Cable Beach - a 13-mile strand of white-sand that stretches along the azure waters of the Indian Ocean.

Pirate William Dampier was the first European to visit Western Australia. Dampier, who circumnavigated the globe three times, landed near Broome in 1688 and again in 1699.

Departure is set for 6PM.

Meals: Onboard Meals

Accommodation: Crown Princess

Day 13

Kimberley Coast (Scenic Cruising)

Located in the northern part of Western Australia, Kimberley is one of the continent's earliest settled regions, dating as far back as 40,000 years. But although its mainland has been inhabited for centuries, its over 8,000 miles of ruggedly beautiful coastline remain so unspoiled that the Kimberley Coast has been identified as one of the least impacted marine environments in the world.

Healthy reefs and incredible biodiversity make the Kimberley Coast a prime spot for marine wildlife viewing, from sea turtles to blue crabs, manta rays and the planet's largest population of humpback whales.

Approaching the Kimberley Coast from the Indian Ocean, you'll make out dramatic red cliffs that stand out in stark contrast to the aquamarine waters of the fringing reefs below. More than 2,600 islands are scattered beyond the reefs, serving as nesting grounds to a variety of seabirds, including cormorants, giant Australian pelicans and Red-footed Boobies. The islands also provide breathtaking scenery in one of the world's most extensive coastal wilderness areas - and the best way to take it all in is from the sea!

Meals: Onboard Meals

Accommodation: Crown Princess

Day 14

At Sea

Today is a day at sea. Simply relax or enjoy the ships facilities and activities.

Meals: Onboard Meals

Accommodation: Crown Princess

Day 15

Darwin

Today you will arrive at 7AM. Closer to Indonesia than to any other Australian city, Darwin is the capital of the "Top End" - the remote, vast Northern Territory. Home to more than half of the territory's population, the city reflects the rugged endurance and individualism required to survive the Outback. Darwin also boasts a colorful history to add to that heritage. During World War II the Japanese bombed the city and threatened invasion. In 1974, Cyclone Tracy cut a destructive swath through the region. In addition, man-eating crocodiles, tropical monsoons, searing heat and bush fires that burn for weeks are all part of everyday life.

Locals in the Top End consume over 60 gallons of beer a year. All those empties don't go to waste: Each year Darwin residents compete in the Beer Can Regatta, a race with boats, rafts and other vessels manufactured out of beer cans.

Departure is set for 10PM.

Meals: Onboard Meals

Accommodation: Crown Princess

Day 16

At Sea

Today is a day at sea. Simply relax or enjoy the ships facilities and activities.

Meals: Onboard Meals

Accommodation: Crown Princess

Day 17

At Sea

Today is a day at sea. Simply relax or enjoy the ships facilities and activities.

Meals: Onboard Meals

Accommodation: Crown Princess

Day 18

At Sea

Today is a day at sea. Simply relax or enjoy the ships facilities and activities.

Meals: Onboard Meals

Accommodation: Crown Princess

Day 19

Port Douglas

Today you will arrive at 8AM. In 1877, the aptly named James Venture Mulligan struck pay dirt on Hodgkinson River, igniting the fabled North Queensland Gold Rush. At the height of the boom, Port Douglas boasted 12,000 residents and 27 hotels. Bust inevitably followed boom, and Port Douglas slid into decades of obscurity. Then came a second gold rush in the 1980s as tourists flocked to the North Queensland Coast. Located between the Wet Tropics World Heritage Area and the Great Barrier Reef, Port Douglas provides a perfect gateway to hardy adventurers en route to rainforest and reef.

In addition to its nearby scenic wonders, Port Douglas boasts several resorts ranging from the Sheraton Mirage to the Daintree Eco Lodge and Spa in the heart of the rainforest.

Note: Port Douglas is an anchorage port. Passengers transfer to shore via ship's tender. Wheelchair Access Limited.

Departure is set for 6PM.

Meals: Onboard Meals

Accommodation: Crown Princess

Day 20

Cairns

Today you will arrive at 7AM. Cairns is one of Australia's hottest vacation destinations. Cairns boasts three of Australia's great natural wonders. Just offshore, immense bastions of living coral form the Great Barrier Reef. Sixteen miles of superb beaches stretch to the north of the city - the famed Marlin Coast. And inland lays the immense Daintree National Park. Cairns itself basks in tropical sunshine, balmy breezes waft in from Trinity Bay. The city's graceful, tree-lined esplanade was once the gateway to the gold fields of North Queensland.

Cairns graceful, tree-lined esplanade was once the gateway to the gold fields of North Queensland. A travel tip - Cairns is pronounced "cans."

Departure is set for 5PM.

Meals: Onboard Meals

Accommodation: Crown Princess

Day 21

Willis Island

This tiny island measures in at just 1,600 feet long by 490 feet wide, though it is the only permanently inhabited island in the Coral Sea Islands Territory. You won't find any neighborhoods, schools or homes here, however. The only structures on Willis Island comprise a weather monitoring station hosted by the Australian Bureau of Meteorology, where just a handful of weather observers reside at any given time.

Willis Island is one of several tropical islands sitting beyond the Great Barrier Reef in the Coral Sea Islands Territory, and is surrounded by thriving reefs where many creatures make their homes. Numbering into the thousands, Willis Island itself caters to many species of seabirds, including Masked, Brown and Red-footed Boobies that cry out nearly 24 hours a day. It is also an important nesting ground for turtles.

Note: Willis Island is a scenic cruising site. Ships will slowly travel past while a knowledgeable port lecturer points out significant sites you'll be able to see from onboard.

Meals: Onboard Meals

Accommodation: Crown Princess

Day 22

At Sea

Today is a day at sea. Simply relax or enjoy the ships facilities and activities.

Meals: Onboard Meals

Accommodation: Crown Princess

Day 23

Brisbane

This morning you will arrive at 8AM. Once considered the "country cousin" among Australian cities, Brisbane is today the nation's third-largest metropolis - and one of the most desirable places to live in the country. Lying on the banks of the meandering Brisbane River, this cosmopolitan city boasts elegant 19th-century sandstone buildings, a lively cultural scene and superb parklands. Brisbane is also your gateway to uniquely Australian adventures, be it the theme parks of the Gold Coast or Queensland's dazzling beaches. The beaches south of Brisbane form Queensland's Gold Coast.

The ship will depart at 5PM.

Meals: Onboard Meals

Accommodation: Crown Princess

Day 24

At Sea

Today is a day at sea. Simply relax or enjoy the ships facilities and activities.

Meals: Onboard Meals

Accommodation: Crown Princess

Day 25

Sydney

This morning you will arrive into Sydney at 6AM and disembark for your return home or an onward journey.

Meals: Breakfast

Inclusions & Exclusions

Inclusions

- 24 Nights onboard the Crown Princess in an unobstructed oceanview stateroom
- All meals onboard (excluding premium dining options where fees apply)
- Entertainment
- Taxes, Fees & Port Expenses

About your Cruise Ship: the '*Crown Princess*'

Enjoy sweeping views of the world while sailing on Crown Princess. From her nearly 900 balconies to the breathtaking three-story Atrium, you'll discover a relaxing atmosphere filled with an array of world class entertainment and dining options that will greet you each day when you return from making fascinating discoveries ashore.

- Last Refurbished: April 2018
- Guest Capacity: 3,080 lower berths
- Number of Crew: 1,200
- Tonnage: 113,561

Princess Plus Package: Drinks and Wi-Fi. Save on the things you're gonna do anyway with the Princess Plus package. Purchase Princess Plus and we'll throw in unlimited juices, fitness classes and premium desserts at no extra cost. From \$65 per day per person.

Exclusions

- Flights
- Travel insurance
- Meals not mentioned.
- Drinks
- Any additional requests
- Cruise Gratuities
- Transfers
- Cruise excursions

Travelling Solo: A single supplement is available upon checkout.

Cruise Upgrade: Wanting to upgrade to a Balcony Stateroom? Contact our Customer Service team for availability and a quote.

Flights, Extension or Add On's: Are you wanting to arrive earlier, stay later or need help with arranging connecting flights with your cruise? Let our Customer Service team know and we will be happy to assist.

Princess Plus Package: Drinks and Wi-Fi. Save on the things you're gonna do anyway with the Princess Plus package. Purchase Princess Plus and we'll throw in unlimited juices, fitness classes and premium desserts at no extra cost. From \$65 per day per person.

Travel Insurance: We recommend Covermore travel insurance. To quote and book, please click [HERE](#).