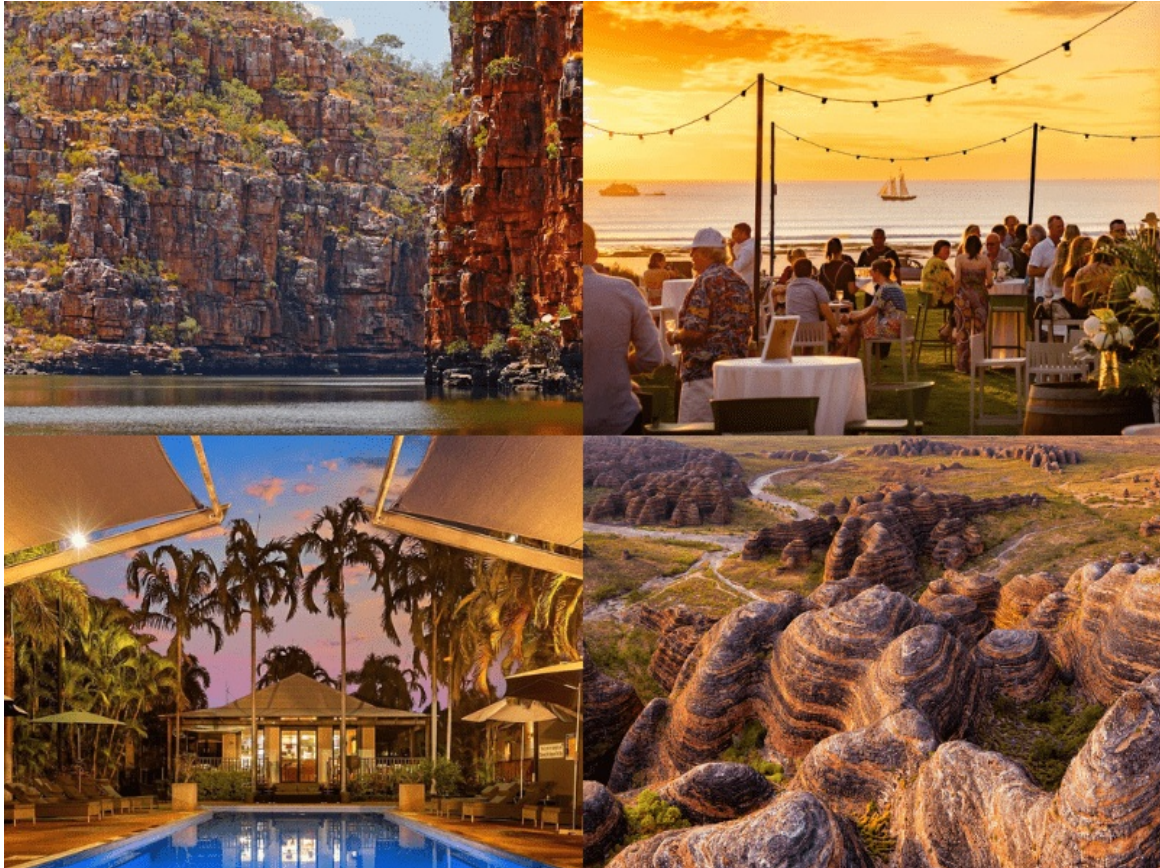


## 13 Days | Ultimate North-West Adventure | LIMITED DEAL

Broome - Kununurra - Berkeley River - Darwin

From **\$8,999** ✈️ pp twin share



3 Nights at The Pearle of Cable Beach in Broome

2 Nights at the Kununurra Country Club with Included Bungle Bungles Tour!

5 Nights Accommodation at the LUXURIOUS Berkeley River Lodge

2 Nights at Darwin Waterfront Short Stay Apartments

## Description

---



Embark on an unforgettable journey through the rugged beauty of Western Australia's Kimberley region with our **EXCLUSIVE Travel Package**

---

**SALE ENDING 23 JUNE**

**BOOK NOW!**

---

Begin your adventure with three nights of indulgence at The Pearle of Cable Beach in Broome. Nestled against the turquoise waters and pristine sands of Cable Beach, The Pearle offers an oasis of luxury and tranquility. Immerse yourself in the laid-back atmosphere of Broome, where the fusion of Indigenous, Asian, and European cultures creates a unique and vibrant ambiance.

Broome itself is a captivating destination, renowned for its stunning sunsets, rich history, and diverse array of attractions. Explore the historic pearling industry at the Pearl Luggers Museum, stroll through the bustling Chinatown district, or embark on a camel ride along the iconic Cable Beach.

From Broome, embark on a flight to Kununurra, gateway to the East Kimberley region. Spend two nights unwinding at the Kununurra Country Club, a luxurious retreat surrounded by the natural splendor of the Kimberley. Indulge in leisurely days by the pool, and venture out to discover the awe-inspiring landscapes of the Kimberley on a scenic tour by air, to the ancient Bungle Bungle Range and the tranquil waters of Lake Argyle.

Next, prepare for an unparalleled experience as you board a scenic flight to

Berkeley River Lodge, nestled amidst the remote wilderness of the Kimberley's Berkeley River. Accessible only by air or sea, this exclusive lodge offers a sanctuary of luxury and seclusion. Settle into your elegantly appointed villa, where floor-to-ceiling windows offer panoramic views of the surrounding wilderness. With all meals and drinks included, savor gourmet dining experiences showcasing the finest local produce, complemented by an extensive selection of wines and beverages.

---

Read our latest Travel Blogs at ['Wake Up Here'](#)

---

During your five-night stay, immerse yourself in the natural wonders of the Kimberley, from guided bushwalks and sunset river cruises to helicopter flights\* over cascading waterfalls and ancient rock formations. Discover secluded beaches, fish for barramundi in the pristine waters of Berkeley River, or simply relax on your private deck and soak in the serenity of this remote paradise.

As your journey draws to a close, board a flight to Darwin, where you'll spend two nights at Darwin Waterfront Short Stay Apartments. Located in the Darwin Harbour area, these modern apartments provide the perfect base for exploring the vibrant city of Darwin. Discover the city's rich Indigenous heritage at the Museum and Art Gallery of the Northern Territory, sample fresh seafood at the iconic Mindil Beach Sunset Market, or take a leisurely stroll along the Darwin Waterfront Precinct, where vibrant restaurants, bars, and shops await.

With its diverse landscapes, rich cultural heritage, and unparalleled natural beauty, the Kimberley region offers a truly immersive and unforgettable travel experience. From the pristine beaches of Broome to the rugged wilderness of the Berkeley River, this journey promises adventure, relaxation, and discovery at every turn. Experience the best of Western Australia's Kimberley with our exclusive travel package, where luxury meets wilderness in the heart of Australia's northwest frontier.

*\*Helicopter tours, are an additional cost and not included in this offer*

Travel**dream**

## Itinerary

---

### Day 1

---

#### Broome

Your luxury adventure starts today!

Make your own way to Broome where you will be staying in a Guest Room for the next 3 nights. The rest of the day is at leisure.

**Meals:** None

**Accommodation:** The Pearle of Cable Beach

---

### Day 2

---

#### Broome

Spend your day at leisure today in Broome! For suggestions on what activities or tours you can book, speak with our Friendly Customer Service Team.

**Meals:** Breakfast

**Accommodation:** The Pearle of Cable Beach

---

### Day 3

---

#### Broome

Spend your day at leisure today in Broome! For suggestions on what activities or tours you can book, speak with our Friendly Customer Service Team.

**Meals:** Breakfast

**Accommodation:** The Pearle of Cable Beach

---

### Day 4

---

#### Broome ✈️ Kununurra

Today you will check out of your accommodation and be flying to Kununurra, ready for your next land-based adventure! The Pearle of Cable Beach will arrange for a transfer to Broome airport the morning of your departure.

On arrival in Kununurra, Kununurra Country Club will organise a transfer from the airport to the hotel. The rest of the day is at leisure.

**Meals:** Breakfast

**Accommodation:** Kununurra Country Club

## Day 5

---

### Kununurra ✈ Bungle Bungles ✈ Kununurra

Today you will head out on a scenic air tour of the Bungle Bungles!

*Please note, due to operational reasons, passengers must be under 130kg to participate in the Bungle Bungles Air tour.*

**Meals:** Breakfast

**Accommodation:** Kununurra Country Club

---

## Day 6

---

### Kununurra ✈ Berkeley River Lodge

This morning is at leisure in Kununurra.

This afternoon you will be transferred to the airport to board a charter flight to Berkeley River Lodge. In one of the last true wilderness areas on earth, between Timor Sea sunrises and Berkeley River sunsets, the ultimate Kimberley adventure and refined indulgence await. Australia's most remote mainland luxury lodge experience, only accessible by air, getting to Berkeley River Lodge is half the adventure. Leave modern life far behind and relax into the rhythms of nature in your luxurious villa floating atop the coastal dunes.

Dedicated and experienced staff are available on-site to guide you on river cruises, 4WD tours, sunset drinks, fishing expeditions, hiking and animal watching, and skilled chefs will cater all of your meals, including a five-course degustation dinner each night. If that's not enough, your private glass-fronted villa with the occasional seating and daybed on your deck beckons you to laze away an afternoon, then enjoy cheese platters and drinks on your balcony as the sun sets over the Timor Sea.

**Meals:** Breakfast and Dinner

**Accommodation:** Berkeley River Lodge

---

## Day 7

---

### Berkeley River Lodge

Enjoy the spectacular facilities offered at this luxurious lodge. Choose to hop on a river cruise, sign up for Bush & Beach 4WD adventures or guided creek walks!

**Meals:** Breakfast, Lunch and Dinner

**Accommodation:** Berkeley River Lodge

## Day 8

---

### **Berkeley River Lodge**

Enjoy the spectacular facilities offered at this luxurious lodge. Choose to hop on a river cruise, sign up for Bush & Beach 4WD adventures or guided creek walks!

**Meals:** Breakfast, Lunch and Dinner

**Accommodation:** Berkeley River Lodge

---

## Day 9

---

### **Berkeley River Lodge**

Enjoy the spectacular facilities offered at this luxurious lodge. Choose to hop on a river cruise, sign up for Bush & Beach 4WD adventures or guided creek walks!

**Meals:** Breakfast, Lunch and Dinner

**Accommodation:** Berkeley River Lodge

---

## Day 10

---

### **Berkeley River Lodge**

Enjoy the spectacular facilities offered at this luxurious lodge. Choose to hop on a river cruise, sign up for Bush & Beach 4WD adventures or guided creek walks!

**Meals:** Breakfast, Lunch and Dinner

**Accommodation:** Berkeley River Lodge

---

## Day 11

---

### **Berkeley River Lodge ✈ Kununurra ✈ Darwin**

After breakfast, depart the lodge for your return flight to Kununurra and then onwards to Darwin. On arrival, a transfer from Darwin Airport to Darwin Waterfront Short Stay Apartments will be provided. Check in and enjoy the rest of the day at your leisure.

**Meals:** Breakfast

**Accommodation:** Darwin Waterfront Short Stay Apartments

## Day 12

---

### Darwin

The day is yours at leisure to explore the city of Darwin and its surrounds.

**Meals:** None

**Accommodation:** Darwin Waterfront Short Stay Apartments

---

## Day 13

---

### Darwin

Today your adventure comes to an end! We trust you have enjoyed this amazing experience. When its time, make your way to the airport for your flight home or your onward journey.

**Meals:** None



## Inclusions & Exclusions

---

### Inclusions

- 3 Nights at The Pearle of Cable Beach in Broome with continental breakfast
- Return air transfers from Broome to Kununurra Airport then onto Berkeley River Lodge and then returning to Darwin (via Kununurra)
- 2 Nights at the Kununurra Country Club with continental breakfast
- 5 Nights Accommodation in a Berkeley River Lodge Villa on a twin share basis with private bathroom facilities
  - 1 King bed (or 2 Single Beds upon request)
  - Room Service
  - Air Conditioning
  - Verandah and outdoor setting
  - Ceiling fans
  - Hairdryer
  - Nespresso Coffee Machine, and a Selection of T2 tea
  - Outdoor open-air shower and bath
- All meals at Berkeley River Lodge (breakfast, lunch and dinner)
- Unlimited beverages at Berkeley River Lodge - soft drink, beer, wine and spirits (excludes premium wines, top-shelf spirits and cocktails)
- Daily activities, including River cruises, Bush & Beach 4WD adventures, guided Creek walks and much more
- 2 Nights at Darwin Waterfront Short Stay Apartments

### Flight Information from Kununurra to Berkeley River Lodge

Transfer - KUNUNURRA to BERKELEY RIVER LODGE

Departure Location: Kununurra Airport - Lot 309 Dusty Rankin Drive

Departure Time: 3PM AWST (WA Time) estimated

Arrival Location: Berkeley Airstrip

Arrival Time: 4PM AWST (WA Time) estimated

*The flight will take approximately 60 minutes.*

*Please arrive 30 minutes prior to the above departure time.*

Transfer - BERKELEY RIVER LODGE to KUNUNURRA

Departure Location: Berkeley Airstrip

Departure Time: 730AM AWST (WA Time) estimated

Arrival Location: Kununurra Airport

Arrival Time: 830AM AWST (WA Time) estimated

*The flight will take approximately 60 minutes.*

**Note: We recommend that you wait for confirmation before booking any connecting flights.**

Due to the last minute nature of this deal - The 14 day refund guarantee does not apply to this deal  
This deal only comes with double bedding. Twin bedding is subject to availability

---

## Exclusions

- Domestic Flights
- Optional gratuities/tipping
- \*Helicopter tours, are an additional cost and not included in this offer
- Personal expenses
- Travel insurance (strongly recommended)

## Important Information

**Arrive Early or Stay Late:** Looking to arrive early or stay late? Call on (03) 7018 8122 or email us at [info@traveldream.com.au](mailto:info@traveldream.com.au) to inquire.

**Child Policy:** Guests on this package must be 18 years and over.

**Insurance:** We strongly recommend that at the time of booking guests take out comprehensive travel, medical, and cancellation insurance. Due to the remote location of Berkeley River Lodge, medical evacuation may be necessary in the case of an emergency and it is the responsibility of guests to ensure they have insurance to cover such an eventuality. Berkeley River Lodge reminds guests that they participate in tours, activities, and experiences at their own risk.

We recommend Covermore travel insurance. To quote and book, please click [HERE](#).